

Our MULTIPACK machine series is the result of more than 30 years' experience in the design and manufacturing of tailor-made solutions, in accordance to every product and production need.

These machines are of solid and compact design, with easy access for cleaning and maintenance. They are extremely reliable and they have been conceived to be operated easily and intuitively.

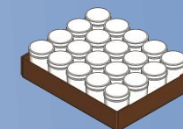
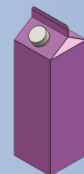
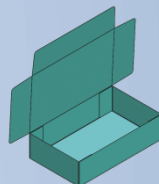
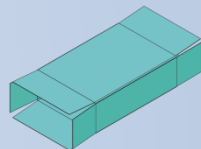
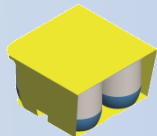
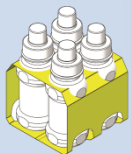
Our MINI PS and PS 30 are our intermittent motion models, specially designed for low to medium sleeving speeds. While the MINI PS is a semiautomatic machine, for manual product loading, the PS 30 is the first of our fully automatic multipack machines range.



ADVANTAGES

- ✓ Flexible and versatile
- ✓ Compact design
- ✓ Quick format change
- ✓ User friendly
- ✓ Production increase
- ✓ Cost reduction

EXPERTS IN PACKAGING



TECHNICAL FEATURES

- Mainly made of stainless steel.
- CE Certificate.
- Servo technology.
- Speed up to 25-28 packs/minute.
- PLC with 7" color touch screen.
- Remote connection system by Internet.
- Hot melt glue equipment.
- 380V 3 phases 50Hz neutral + earth (or as per customer's requirements).
- Pneumatic supply: 6 bars.
- Weight: 600-650kg
- Dimensions:
2160-2650 L x 1030 W x 1260-1680 H
- Freedom to choose any carton, material or packs supplier.
- Flexibility to use different paperboard types; even recycled paperboard (subject to product and pack features).
- Assistance on pack optimization (material, design, etc.)

APPLICATIONS

Trays, individual cups, bottles, thermoformed tubs, cans, etc. of different materials such as plastic, glass, clay, etc.

- Multiformat machines,
- Multiple configurations,
- Total wraparound, partial wraparound, clip...
• 1 or 2 rows

Subject to product features, required configurations and pack styles.

OPERATION

1. Carton is picked up from the magazine by the vacuum arm.
2. Product is manually or automatically placed over the carton at the product loading station.
3. The pack is automatically formed around the product.
4. It is glued on top and ejected automatically.

